

# Alaska Department of Fish and Game

Habitat Section  
Southeast Region



## 114-23-10700-2005 Tributary 3

## ADDITION

**Water body name:**

**Survey date:** 6/29/2024

**Quad:** Juneau A-6

**Species & Lifestage:**

**Upper Reach Latitude:** 58.143897 **Longitude:** -135.895906

**Survey crew:** CD, DK

**Lower Reach Latitude:** 58.143919 **Longitude:** -135.897231

**Findings:** We surveyed this uncataloged stream from the road using a backpack electrofisher and GPS and captured juvenile coho salmon and cutthroat trout. Two stream channels converge at the culvert inlet resulting in the backwatering of the pipe. The culvert here has substantial rust and is squashed due to the weight of the roadbed but doesn't appear to be blocking fish passage. Good fish habitat appears to continue upstream, warranting future investigation. (Table 1; Figures 1–3)

**Recommendations:** Add this stream into the anadromous waters catalog for rearing coho salmon. (Figure 4).

**Nomination:** Pending

Table 1.–114-23-10700-2005 Tributary 3 survey data.

Waypoint	Latitude	Longitude	Notes	Stream Width ft	Stream Substrate	Habitat Features	Gradient %	Sample Effort	Sample Results
479	58.143895	-135.895930	24 inch CMP inlet is flooded by two channels that converge on the culvert. Culvert is fully backwatered. Culvert is very rusted and is squashed due to weight of road bed. Second coho escaped net prior to picture. Habitat continues upstream for a ways.	15-20	Fine Organic		0-1		2 CO 1 CT



Figure 1.–Juvenile coho salmon captured at waypoint 479.



Figure 2.– Channel at waypoint 479.



Figure 3.– Outlet of culvert at waypoint 479.

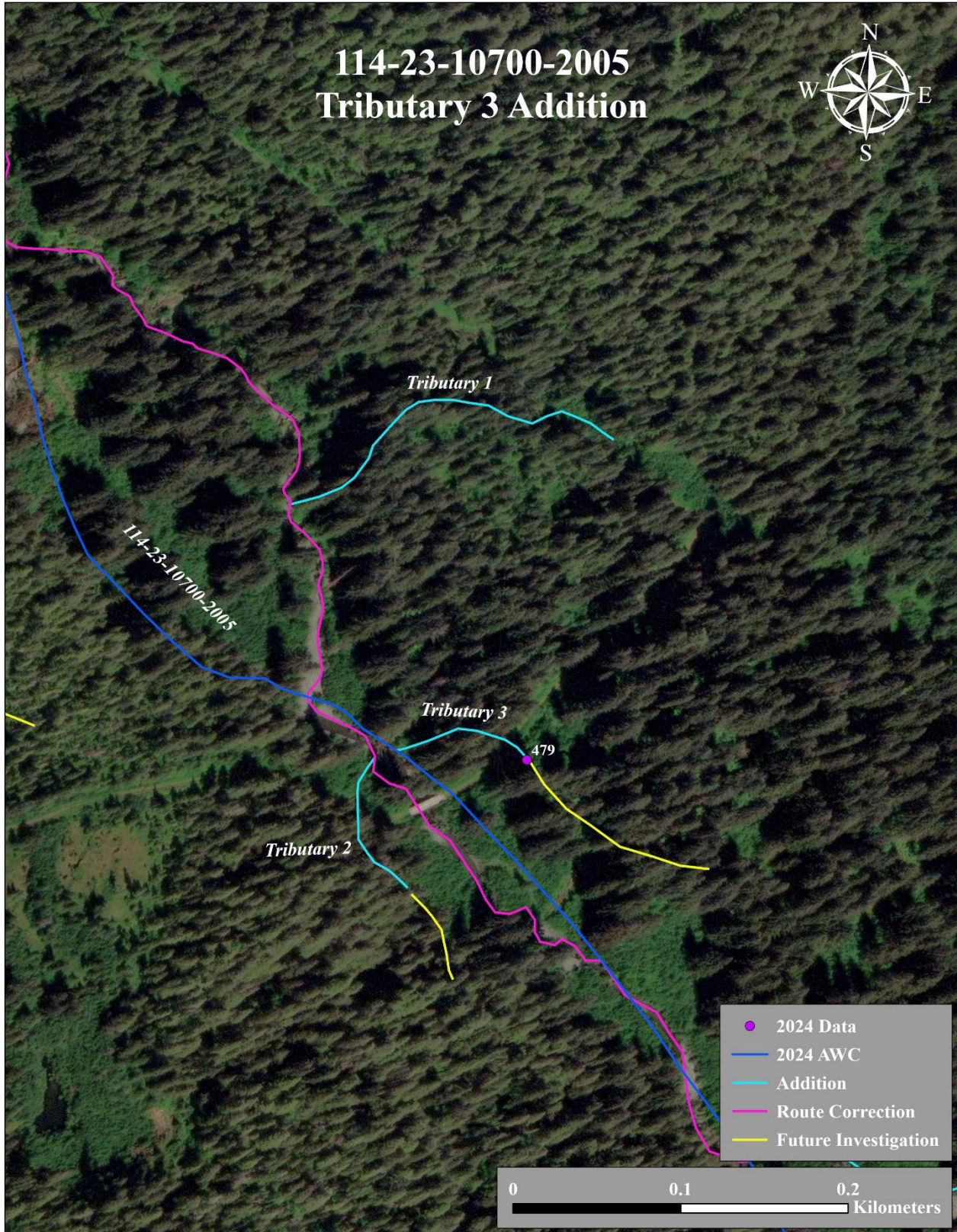


Figure 4.—Stream No. 114-23-10700-2005 Tributary 3 addition.